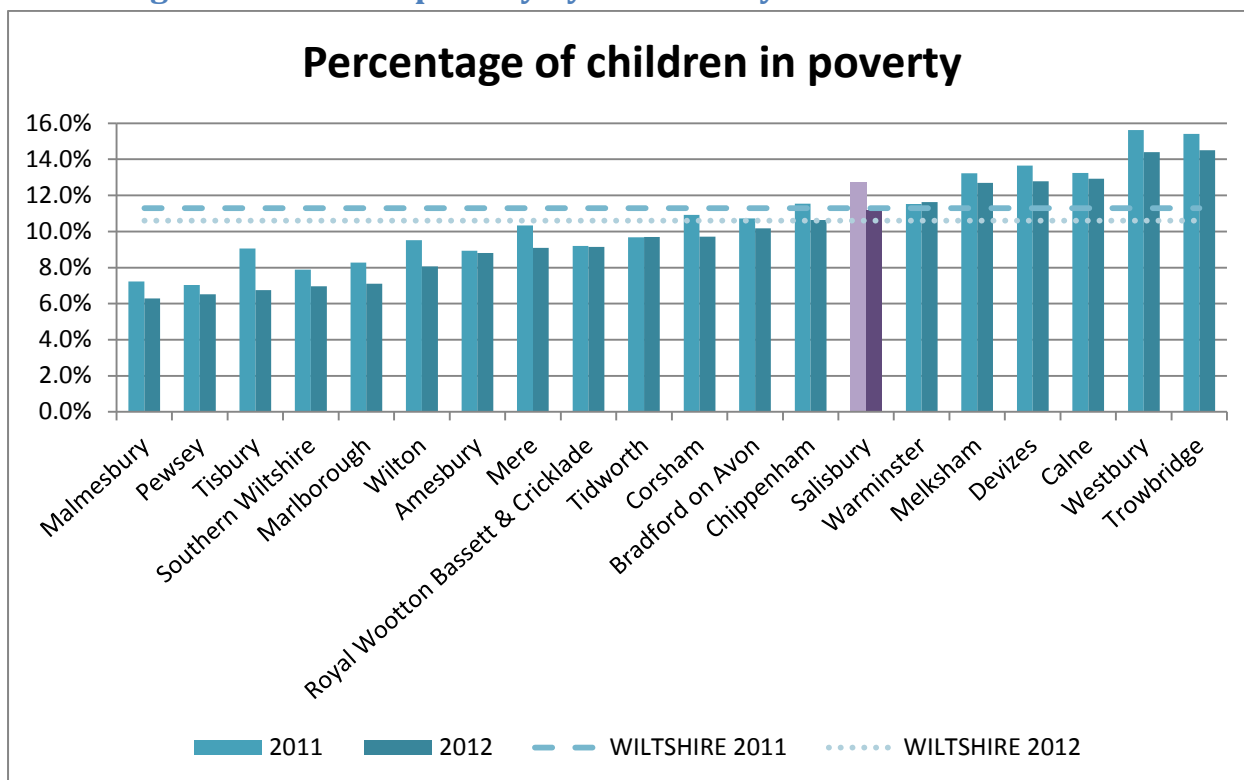


Child Poverty Briefing: Salisbury Community Area

This community area level briefing note supplements the Wiltshire Child Poverty Needs Assessment 2014. The full document can be accessed via the Wiltshire Intelligence Network:

www.intelligencenetwork.org.uk/health/children-and-young-people/

Percentage of children in poverty by Community Area ⁱ



Number of children in poverty – Salisbury Community Area summary:

Year	Number of children in poverty in Salisbury Community Area	Percentage of children in poverty in Salisbury Community Area	Percentage of children in poverty in Wiltshire
2006	1160	13.5%	10.9%
2007	1120	13.2%	11.3%
2008	1095	12.8%	10.9%
2009	1190	14.5%	11.9%
2010	1095	13.1%	11.6%
2011	1085	12.7%	11.4%
2012	950	11.2%	10.6%
Change, 2006-2012	-210	-2.3%	-0.3%

Children in poverty in Salisbury Community Area, family composition:

Indicator	Salisbury Community Area	Wiltshire
Number of children aged <20 in poverty	950	10,810
% children in poverty living in lone parent families ⁱⁱ	74.8%	70.2%
% children in poverty in large (4+ children) families	16.9%	17.0%
% children in poverty who are aged 0-4 ⁱⁱⁱ	36.5%	35.1%
% children in poverty who are aged 5-10	33.9%	32.5%
% children in poverty who are aged 11-15	20.1%	22.6%
% children in poverty who are aged 16-19	9.5%	9.7%

Children in poverty in Salisbury Community Area, employment:

Indicator	Salisbury Community Area	Wiltshire
% children living in unemployed households	9.1%	8.4%
% children in poverty living in unemployed households	81.6%	79.4%
% children in poverty living in employed households	18.4%	20.6%
Unemployment rate, all families ^{iv}	8.0%	7.1%
Unemployment rate, lone parents ^v	32.1%	32.0%
Median gross annual earnings, employed persons ^{vi}	-	£20,657
Median gross annual earnings, employed females	-	£15,873
Median gross annual earnings, part-time employed persons	-	£8,543
25 th percentile gross annual earnings, employed persons	-	£12,114
25 th percentile gross annual earnings, employed females	-	£8,182

Children in poverty in Salisbury Community Area, education:

Indicator	Salisbury Community Area	Wiltshire
Key Stage 2 free school meal attainment gap ^{vii}	45.7%	20.7%
Key Stage 4 free school meal attainment gap ^{viii}	41.3%	31.1%
Persistent absences per 1000 5-15 yr olds	47.2	34.2
Active Common Assessment Frameworks per 1000 0-18 yr olds	22.6	16.4

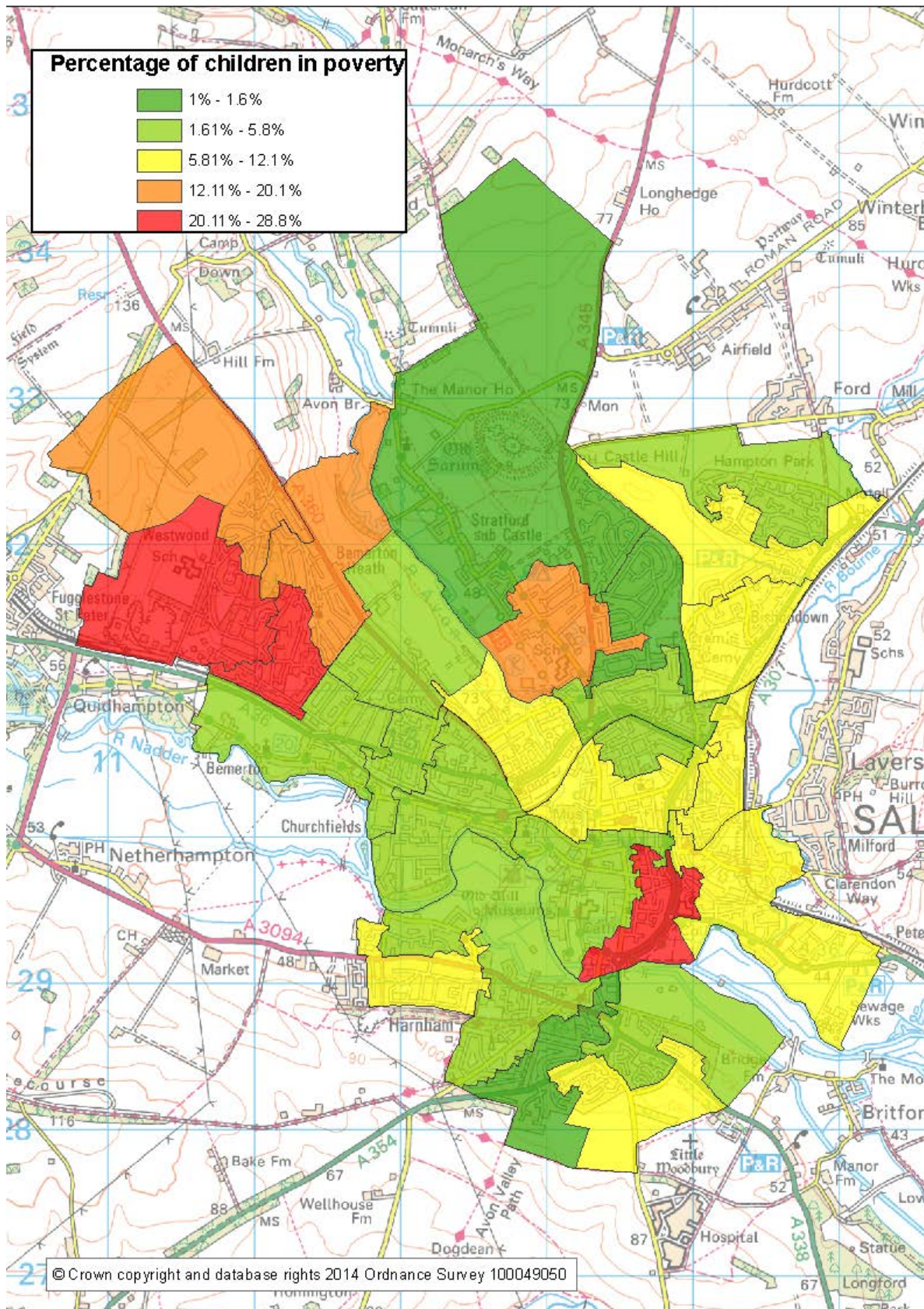
Children in poverty in Salisbury Community Area, health:

Indicator	Salisbury Community Area	Wiltshire
% children who are obese/overweight, Reception Year	20.7%	21.2%
% children who are obese/overweight, Year 6	31.1%	29.6%
Under-18 conception rate, per 1000 15-17 yr old females	30.8	21.5
Under-20 hospital admissions for injuries rate, per 100 children ^{ix}	1.5	1.1

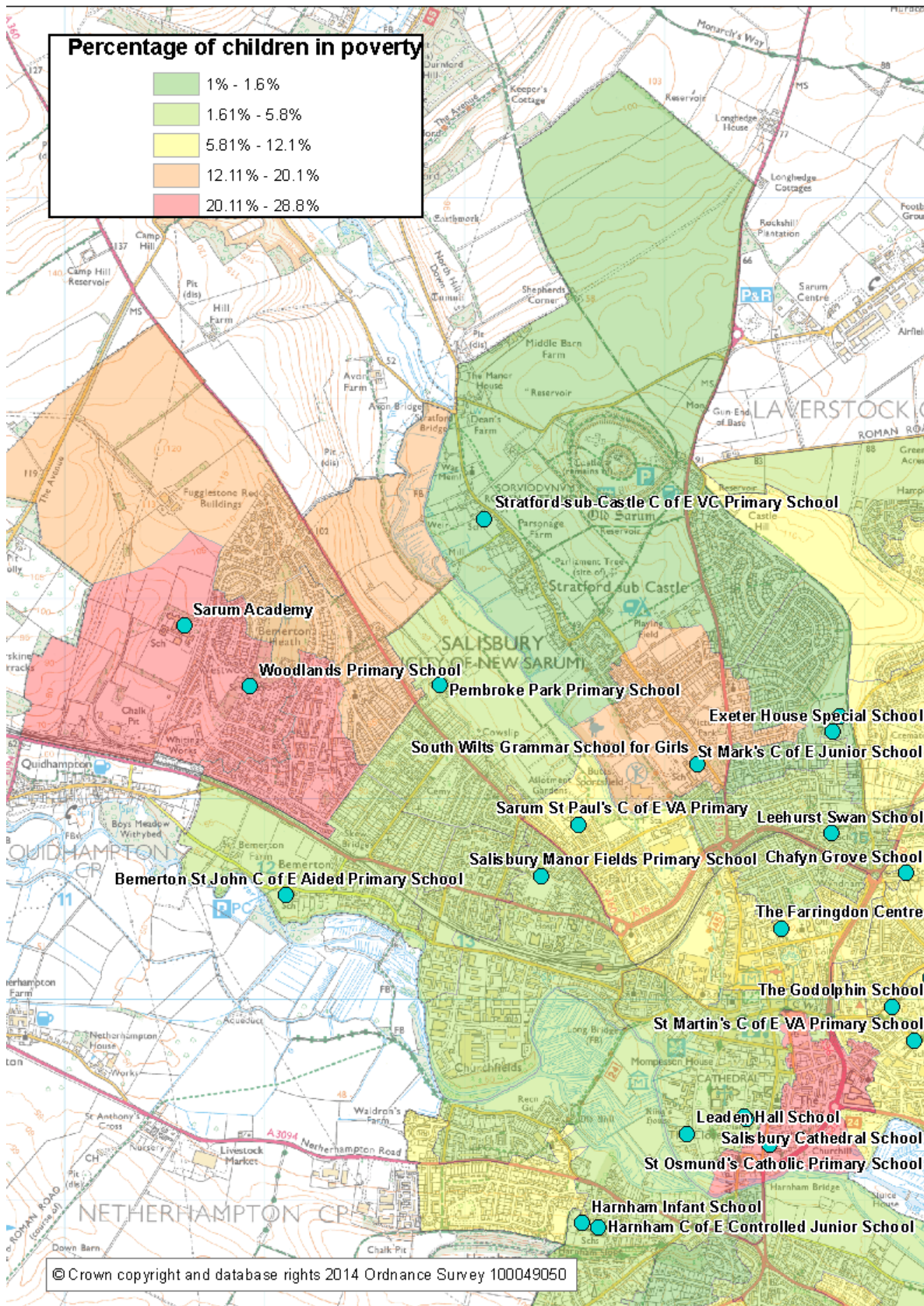
Children in poverty in Salisbury Community Area, housing:

Indicator	Salisbury Community Area	Wiltshire
Children in homeless families per 1000 children ^x	15.2	6.6
% children aged 0-9 living in socially rented homes ^{xi}	26.3%	20.3%
% children aged 0-9 living in privately rented homes	22.9%	25.9%
% children aged 10-18 living in socially rented homes	25.4%	18.7%
% children aged 10-18 living in privately rented homes	11.5%	14.8%
Households in fuel poverty (LIHC measure) ^{xii}	8.5%	7.9%

Percentage of children in poverty in Salisbury Community Area, by lower super output area: xiii



Percentage of children in poverty in Salisbury Community Area, by lower super output area, detail:



Children in poverty in Salisbury Community Area, lower super output area summary:

Output area	Children in poverty	% children in poverty	Wilts rank, % children in poverty (1=most, 285=least)	Wilts rank in 2011	% children in unemployed households	% children in poverty in unemployed households ^{xiv}	Children aged 0-4 in poverty
St Martin - central	100	28.8%	9	6	24.5%	85.0%	45
Bemerton - south	140	27.0%	13	11	21.2%	78.6%	65
Bemerton - west	120	25.2%	16	13	23.1%	91.7%	45
Bemerton - north	75	20.1%	30	32	17.4%	86.7%	20
Bemerton - east	65	19.9%	32	63	18.4%	92.3%	20
St Mark - west	60	17.9%	39	23	13.4%	75.0%	20
Bishopdown - south	25	12.1%	85	61	9.7%	80.0%	10
Harnham West - south	40	11.9%	87	95	8.9%	75.0%	10
St Martin - east (Milford south)	30	11.6%	91	62	5.8%	50.0%	20
St Edmund - east (Milford north)	30	10.7%	108	116	5.4%	50.0%	10
St Edmund - south	20	10.3%	116	60	10.3%	100.0%	5
Harnham East - south	40	10.1%	119	88	8.8%	87.5%	20
Bishopdown - central	30	9.3%	126	166	7.8%	83.3%	10
St Paul - south	35	8.5%	137	110	7.4%	100.0%	15
Churchfields - east	10	5.8%	195	178	5.8%	100.0%	5
St Martin - west	10	5.7%	196	118	2.9%	50.0%	<5
St Mark - south	15	4.9%	213	242	3.3%	66.7%	5
Churchfields - west	10	4.7%	217	205	4.7%	100.0%	5
Harnham West - north	15	4.7%	217	249	1.6%	33.3%	5
Bemerton Village	15	4.5%	223	164	4.5%	100.0%	5
St Edmund - north	10	4.4%	224	255	2.2%	50.0%	<5
St Paul - north	10	4.4%	224	166	2.9%	100.0%	<5
Bishopdown - north	20	4.3%	228	210	3.2%	75.0%	<5
Harnham East - east	10	4.3%	228	186	4.3%	100.0%	5
Harnham East - west	5	1.6%	276	275	1.6%	100.0%	<5
St Mark - east	5	1.5%	278	277	1.5%	100.0%	<5
Stratford	5	1.0%	280	270	<1.0%	n/k	<5

Children in poverty in Salisbury Community Area, lower super output areas with 12%+ children in poverty:

	St Martin - central	Bemerton - south	Bemerton - west	Bemerton - north	Bemerton - east	St Mark - west	Bishopdown - south	SALISBURY COMMUNITY AREA
% children in poverty	28.8%	27.0%	25.2%	20.1%	19.9%	17.9%	12.1%	11.2%
No. children in poverty	100	140	120	75	65	60	25	950
FAMILY COMPOSITION:^{xv}								
% children in poverty living in lone parent families	60.0%	85.7%	70.8%	73.3%	76.9%	50.0%	100.0%	73.2%
% children in poverty in large (4+ children) families	25.0%	10.7%	20.8%	37.5%	15.4%	16.7%	16.7%	16.9%
% children in poverty who are aged 0-4	45.0%	44.8%	36.0%	25.0%	28.6%	33.3%	n/k	36.5%
% children in poverty who are aged 5-10	30.0%	31.0%	32.0%	43.8%	42.9%	33.3%	n/k	33.9%
% children in poverty who are aged 11-15	15.0%	17.2%	20.0%	18.8%	21.4%	25.0%	n/k	20.1%
% children in poverty who are aged 16-19	10.0%	6.9%	12.0%	12.5%	7.1%	8.3%	n/k	9.5%
EMPLOYMENT:								
Unemployment rate, all families	22.6%	19.8%	18.9%	11.8%	9.3%	13.7%	9.2%	8.0%
Unemployment rate, lone parents	53.8%	43.6%	42.1%	40.0%	34.4%	45.5%	31.4%	32.1%
% children living in unemployed households ^{xvi}	24.5%	21.2%	23.1%	17.4%	18.4%	13.4%	9.7%	9.1%

References:

ⁱ Department for Work and Pensions (DWP). Children aged <20 in families in receipt of tax credits at <60% median income or in receipt of IS/JSA/ESA, as a percentage of total children aged <20 (the latter from Child Benefit data). Except where specified separately in the tables, all references to 'children in poverty' in this briefing note refer to this annual DWP measure of children aged under 20, which is taken on the 31st August each year.

ⁱⁱ Percentages in this table are based on rounded totals.

ⁱⁱⁱ Percentage age breakdowns do not sum due to independent rounding.

^{iv} Families with dependent children in which no parent is in work. Census 2011, Table LC1601EW - Family status by number of parents working by economic activity.

^v Lone parents not in work. *Ibid.*

^{vi} All earnings data from the Annual Survey of Hours and Earnings, 2014.

^{vii} Percentage gap between pupils eligible for free school meals (FSM) achieving Level 4+ in English and Maths at KS2 and pupils ineligible for FSM achieving the same. Academic year 2011/12. EPAS 27th Nov 2012.

^{viii} Percentage gap between pupils eligible and ineligible for FSM achieving 5 A*-C grade GCSEs (and equivalent). Academic year 2011/12. DoE, SFR04/2013.

^{ix} Hospital Episode Statistics (HES), Health & Social Care Information Centre, 2012/13. Hospital admissions caused by unintentional and deliberate injuries in children aged 0-20 years, excluding admissions arising from quality of care, by residential postcode. Rate per 100 children aged <20 from DWP Child Benefit data, 31st August 2012.

^x Children in families accepted by Wiltshire Council as eligible, unintentionally homeless and in priority need of housing from 1st January to 31st December 2014 inclusive.

^{xi} Census 2011, Table LC4103EW – Numbers of bedrooms by tenure by age of dependent children.

^{xii} Department of Energy and Climate Change (DECC), 2012, Fuel poverty sub-regional statistics. The LIHC (low income high costs) definition is one of two methods used by DECC to calculate fuel poverty, and tends to return lower estimates than the alternative "10%" method.

^{xiii} A Lower Super Output Area (LSOA) is a small area Census geography that includes an average of approximately 1,500 residents and 650 households. There are 285 LSOAs in Wiltshire.

^{xiv} Percentages are based on rounded totals.

^{xv} Percentages in this section are based on rounded totals.

^{xvi} Percentages are based on rounded totals.